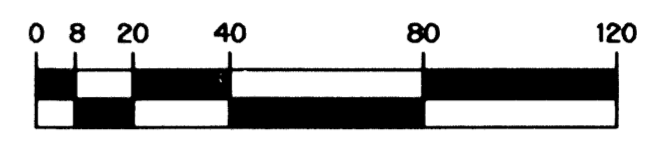


GOLF CLUB ESTATES PLANNED UNIT DEVELOPMENT

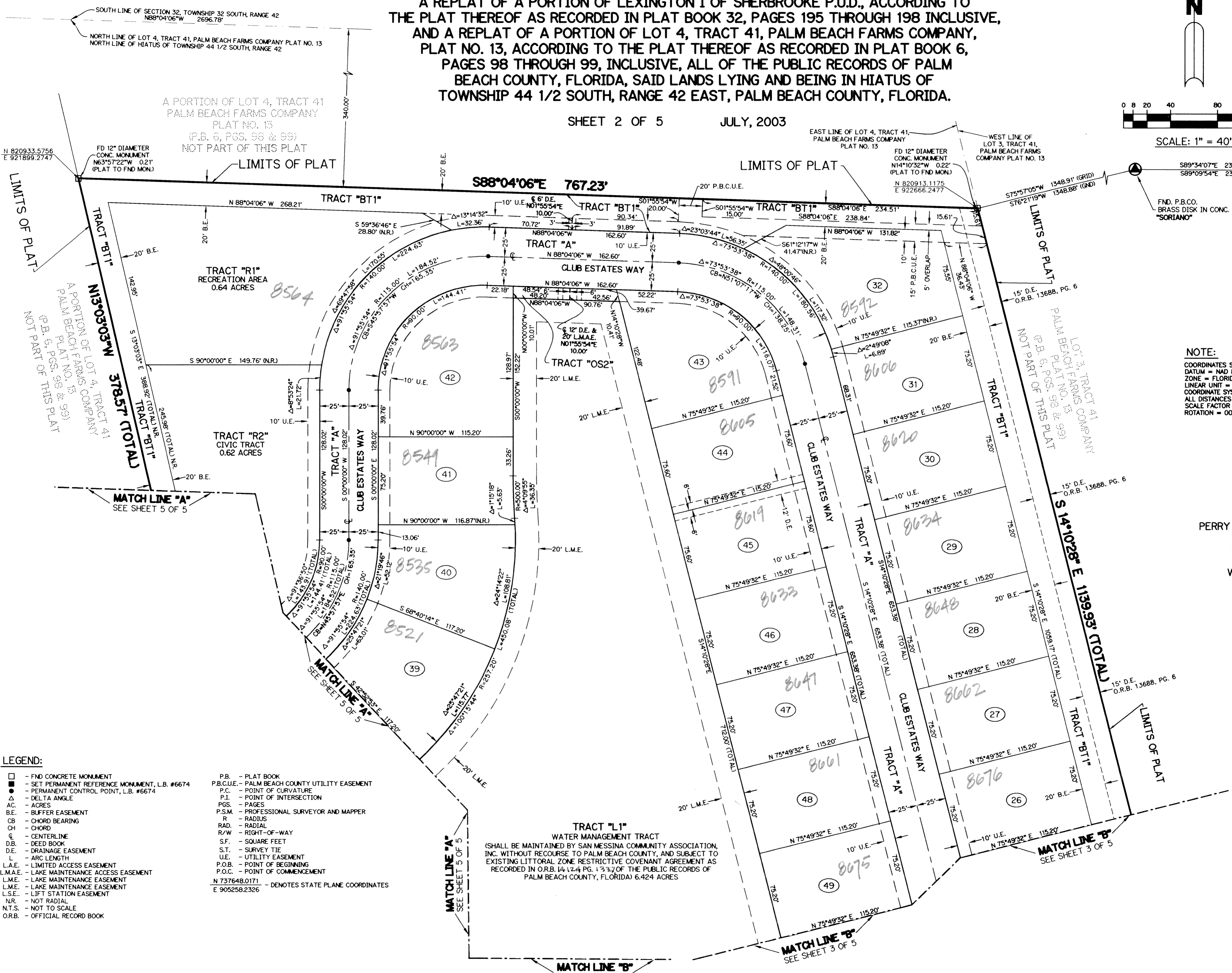
GOLF CLUB ESTATES

A REPLAT OF A PORTION OF LEXINGTON I OF SHERBROOKE P.U.D., ACCORDING TO THE PLAT THEREOF AS RECORDED IN PLAT BOOK 32, PAGES 195 THROUGH 198 INCLUSIVE, AND A REPLAT OF A PORTION OF LOT 4, TRACT 41, PALM BEACH FARMS COMPANY, PLAT NO. 13, ACCORDING TO THE PLAT THEREOF AS RECORDED IN PLAT BOOK 6, PAGES 98 THROUGH 99, INCLUSIVE, ALL OF THE PUBLIC RECORDS OF PALM BEACH COUNTY, FLORIDA, SAID LANDS LYING AND BEING IN HIATUS OF TOWNSHIP 44 1/2 SOUTH, RANGE 42 EAST, PALM BEACH COUNTY, FLORIDA.

SHEET 2 OF 5 JULY, 2003



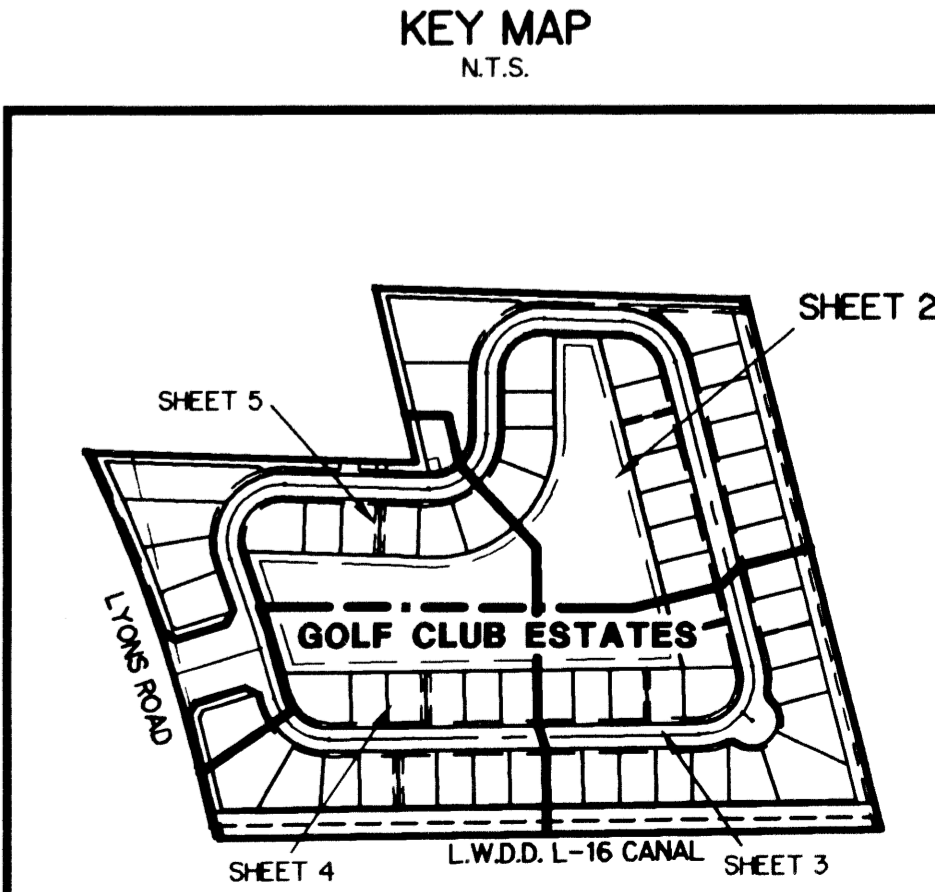
SCALE: 1" = 40'



NOTE:
COORDINATES SHOWN ARE GRID COORDINATES
DATUM = NAD 83 (1990 ADJUSTMENT)
ZONE = FLORIDA EAST ZONE
LINEAR UNIT = U.S. SURVEY FEET
COORDINATE SYSTEM = 1983 STATE PLANE TRANSVERSE MERCATOR PROJECTION
ALL DISTANCES ARE GROUND
SCALE FACTOR = 1.0000222
ROTATION = 0°24'14" CLOCKWISE (GRID BEARING TO PLAT BEARING)

THIS INSTRUMENT PREPARED BY
PERRY C. WHITE, P.S.M. 4213, STATE OF FLORIDA
LAWSON, NOBLE AND WEBB, INC.
ENGINEERS PLANNERS SURVEYORS
420 COLUMBIA DRIVE
WEST PALM BEACH, FLORIDA 33409
LB-6674

- LEGEND:**
- - FIND CONCRETE MONUMENT
 - - SET PERMANENT REFERENCE MONUMENT, L.B. #6674
 - - PERMANENT CONTROL POINT, L.B. #6674
 - ▲ - DELTA ANGLE
 - AC. - ACRES
 - B.E. - BUFFER EASEMENT
 - CB - CHORD BEARING
 - CH - CHORD
 - C - CENTERLINE
 - DB. - DEED BOOK
 - DE. - DRAINAGE EASEMENT
 - L. - ARC LENGTH
 - L.A.E. - LIMITED ACCESS EASEMENT
 - L.M.A.E. - LAKE MAINTENANCE ACCESS EASEMENT
 - L.M.E. - LAKE MAINTENANCE EASEMENT
 - L.S.E. - LIFT STATION EASEMENT
 - NR. - NOT RADIAL
 - NT.S. - NOT TO SCALE
 - O.R.B. - OFFICIAL RECORD BOOK
 - P.B. - PLAT BOOK
 - P.B.C.U.E. - PALM BEACH COUNTY UTILITY EASEMENT
 - P.C. - POINT OF CURVATURE
 - P.I. - POINT OF INTERSECTION
 - PGS. - PAGES
 - P.S.M. - PROFESSIONAL SURVEYOR AND MAPPER
 - R. - RADIUS
 - RAD. - RADIAL
 - R/W. - RIGHT-OF-WAY
 - S.F. - SQUARE FEET
 - S.T. - SURVEY TIE
 - U.E. - UTILITY EASEMENT
 - P.O.B. - POINT OF BEGINNING
 - P.O.C. - POINT OF COMMENCEMENT
 - N 737648.0171
E 905258.2326 - DENOTES STATE PLANE COORDINATES



SUBDIVISION: GOLF CLUBS ESTATES
PAGE: 2
BOOK: 102
FLOOD MAP: 170A
ZONING: PUD
QUAD: 48
S.E.
TAG: 1025
FUD NAME: Golf Clubs Est